



## Stella Maris North Scale

Barrow-In-Furness, LA14 3RP

Offers In The Region Of £360,000



3



1



2



E

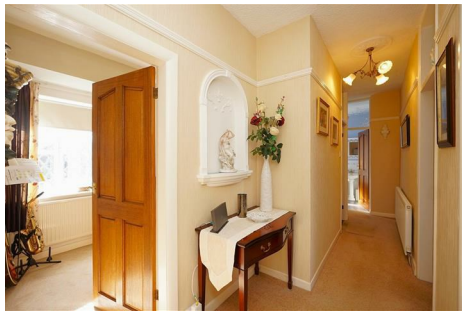




# Stella Maris North Scale

Barrow-In-Furness, LA14 3RP

## Offers In The Region Of £360,000



### Living Room

15'9" x 12'6" (4.823 x 3.823)

### Hallway

17'3" x 4'3" (5.276 x 1.305)

### Kitchen

14'4" x 8'6" (4.386 x 2.599)

### Sitting-Dining Room

13'11" x 11'11" (4.250 x 3.636)

### Bedroom One

10'10" x 10'0" (3.308 x 3.056)

### Bedroom Two

12'4" x 9'6" (3.784 x 2.915)

### Bedroom Three

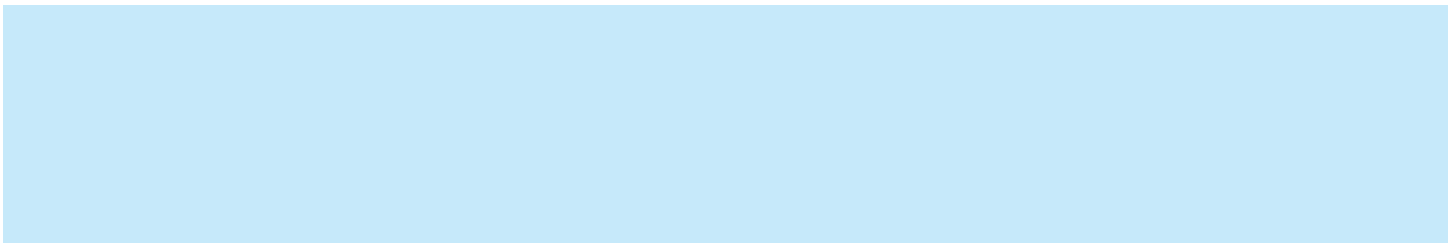
9'0" x 7'2" (2.755 x 2.202)

### Bathroom

9'2" x 4'10" (2.807 x 1.476)

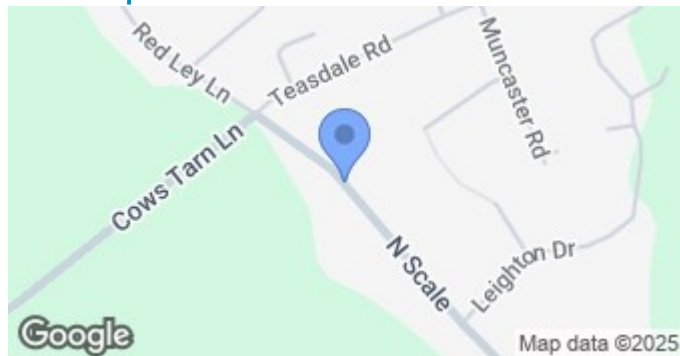
### Garage

13'8" x 7'8" (4.179 x 2.346)

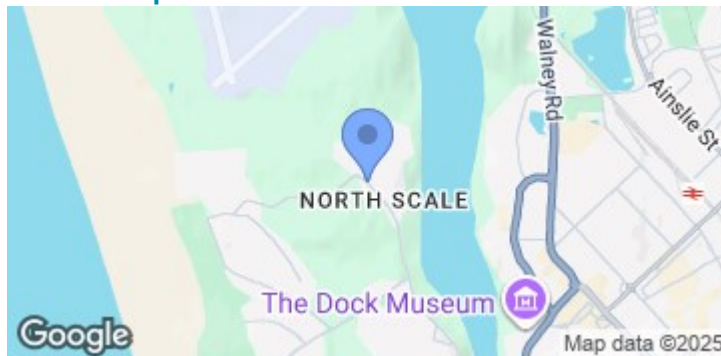




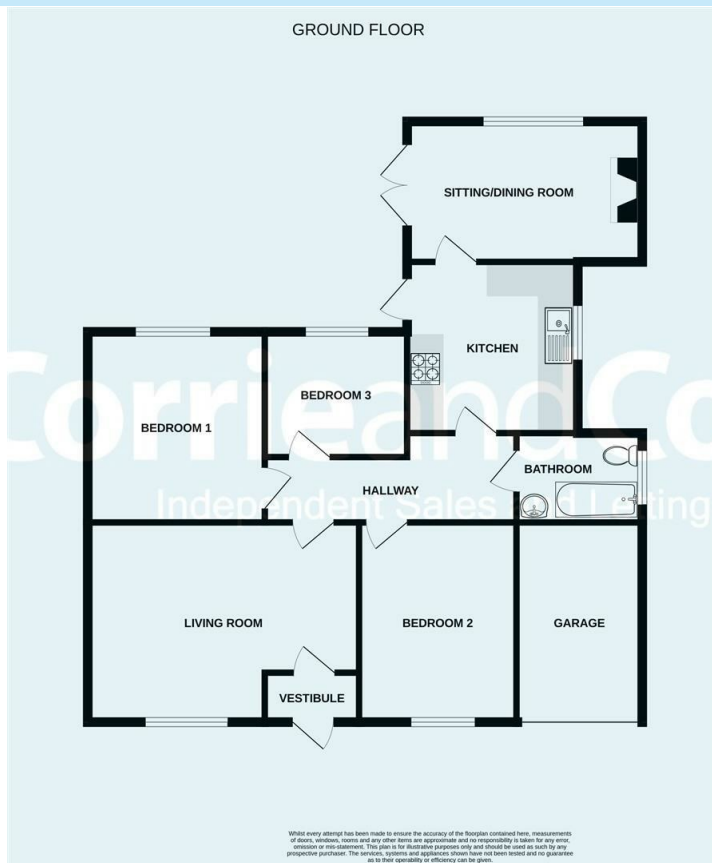
## Road Map



## Terrain Map



## Floor Plan



**We are local, family run business who are wholly independent which means we can recommend services to most suit your needs. Our aim is to provide quality advice and expertise at all times, so you can make an informed decision whether buying or selling.**

Estate agents are required by law to check a buyers /sellers identity to prevent Money Laundering and fraud. You do have to produce documents to prove your identity or address and information on your source of funds. Checking this information is a legal requirement to help safeguard your transaction, and failing to provide ID could cause delays. Corrie and Co, outsource these checks to speed up the process. The company does charge for such checks, please ask for more information and guidance on associated costs.

To ensure your move is stress free, we can help with Mortgage advice. We work alongside local Solicitors, offering competitive conveyancing services. Ask for further information.

